



## CRM-FO

10-100 ton  
Stroke 50-160 mm  
700 bar

Series  
**CRM-FO**

## Hollow, single acting cylinders with spring return

### Cylinders for tensioning operations, maintenance and testing



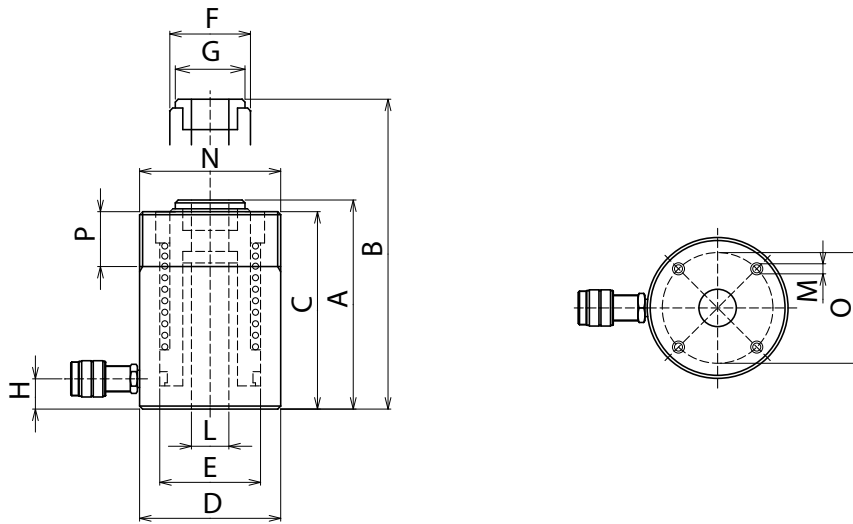
- Single acting hollow hydraulic cylinders spring return, high pressure. Push force from 10 to 100 tons with range of strokes from 50 mm to 160 mm.
- Hydraulic cylinders with hollow center suitable for operations of tensioning, maintenance and testing; for cable tensioning operations, positioning bars in tensile structures, pulley assembly and disassembly, and cable and tie rod pulling tests.
- The guiding surfaces are sized to guarantee optimal performance in load offset absorption and stop-ring increases safety for the operator avoiding the over stroke of the piston.
- Equipped with high strength gaskets for maximum durability.
- 3/8 " NPT female coupler with dust cap equipped and

threaded section on the outer body of the cylinder.

- High strength head.
- External painting and Nitox ONC treatment on all mechanical components for maximum resistance against corrosion and wear up to 30 ton models. 60 ton and higher capacity models feature a Nitox ONC treatment on all mechanical parts.
- All models weighing more than 20 kg are equipped with lifting eyebolts.
- Possibility to design and produce custom made hydraulic cylinders on request, with dedicated geometries, performances and features.

### CUSTOM CYLINDERS ON REQUEST





CRM-FO

CAP/Force ton (kN)	STROKE mm	MODEL	SECTION cm <sup>2</sup>	VOLUME cm <sup>3</sup>	MASS kg	DIMENSIONS in mm												
						A	B	C	D	E	F	G	H	L	M	N	O	P
<b>10</b> /116,8	50	CRM-10/50-FO	16,69	83	3,9	143	193	139	75	55	38	34,5	19	19,5	2xM8	M75x2	58	20
	80	CRM-10/80-FO	16,69	134	5	191	271	187	75	55	38	34,5	19	19,5	2xM8	M75x2	58	20
<b>20</b> /229,9	50	CRM-20/50-FO	32,8	164	7,7	158	208	153	100	75	55	44,5	19	27,3	2xM8	M100x2	75	20
	100	CRM-20/100-FO	32,8	328	11,8	246	346	241	100	75	55	44,5	19	27,3	2xM8	M100x2	75	20
	160	CRM-20/160-FO	32,8	525	15,8	345	505	340	100	75	55	44,5	19	27,3	2xM8	M100x2	75	20
<b>30</b> /300	50	CRM-30/50-FO	42,9	214	11,4	175	225	170	115	85	65	62	20	33,5	2xM10	M115x2	90	20
	100	CRM-30/100-FO	42,9	429	16,7	265	365	260	115	85	65	62	20	33,5	2xM10	M115x2	90	20
	150	CRM-30/150-FO	42,9	643	22,2	361	511	356	115	85	65	62	20	33,5	2xM10	M115x2	90	20
<b>60</b> /589,6	75	CRM-60/75-FO	84,2	632	30	262	337	250	160	125	90	90	30	54,5	2xM12	M160x4	130	35
	150	CRM-60/150-FO	84,2	1264	37	337	487	325	160	125	90	90	30	54,5	2xM12	M160x4	130	35
<b>100</b> /947	75	CRM-100/75-FO	135,3	1015	55	267	342	255	215	165	125	125	38	80,5	4xM12	M215x4	175	45

Different strokes and tonnages available.

## BRIDGES - SPACERS – CUSTOM REACTION TOOLS

Possibility of creating reaction bridges, custom spacers and specific equipment suitable for the installation on hollow cylinders.

