

**CSE GS**

10-600 ton  
Stroke 25-300 mm  
700 bar

Series  
**CSE GS**

## Single acting high tonnage cylinder, load return with lock nut

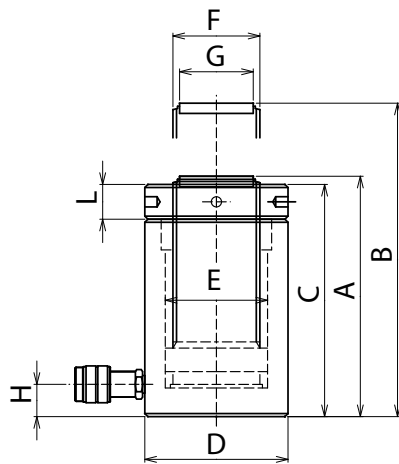


### High Tonnage cylinders, lock nut, load return

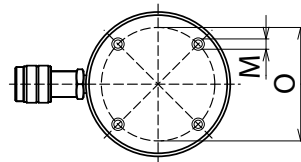
- High tonnage hydraulic cylinders, with lock nut, load return, high pressure . Push force from 10 to 600 ton, with range of strokes from 25 mm to 300 mm on customer request.
- High tonnage hydraulic cylinders up to 3.000 ton, suitable for heavy usage, lifting operations, pushing and heavy lifting.
- Lock nut for safe load upkeep. The threaded nut allows the locking and the mechanical upkeep of the load even for very long periods of time with disconnected pump. The operator then has the opportunity to work under raised load in complete safety.
- The guiding surfaces are sized to guarantee optimal performance in load offset absorption and the stop ring increases safety for the operator avoiding the extra stroke of piston.
- Equipped with high strength gaskets for maximum durability.
- 3/8 " NPT female coupler with dust cap equipped.
- Removable high strength head and possibility of mounting a tilting saddle for better distribution of the load to be lifted.
- Nitox ONC treatment on all mechanical components for maximum resistance against corrosion and wear.
- All models weighing more than 20 kg are equipped with lifting eyebolts.
- Possibility to design and produce custom made hydraulic cylinders on request, with dedicated geometries, performances and features.

### CUSTOM CYLINDERS ON REQUEST





CSE-GS



CAP/Force ton (kN)	STROKE mm	MODEL	SECTION cm <sup>2</sup>	VOLUME cm <sup>3</sup>	MASS kg	DIMENSIONS in mm										
						A	B	C	D	E	F	G	H	L	M	O
<b>50</b> /549,8	50	CSE-50/50-GS	78,5	392,6	19,2	173	223	165	140	100	Tr85x6	72	30	34	M10	110
	100	CSE-50/100-GS	78,5	785,3	25,8	235	335	227	140	100	Tr85x6	72	30	34	M10	110
	150	CSE-50/150-GS	78,5	1178	30,9	285	435	277	140	100	Tr85x6	72	30	34	M10	110
<b>100</b> /1077,6	50	CSE-100/50-GS	153,9	769,7	41	202	252	188	190	140	Tr120x10	92	34	48	M10	150
	100	CSE-100/100-GS	153,9	1539,3	51	252	352	238	190	140	Tr120x10	92	34	48	M10	150
	150	CSE-100/150-GS	153,9	2309	63	312	462	298	190	140	Tr120x10	92	34	48	M10	150
	200	CSE-100/200-GS	153,9	3078,7	72	362	562	348	190	140	Tr120x10	92	34	48	M10	150
<b>150</b> /1407,4	50	CSE-150/50-GS	201,1	1005,3	69	252	302	238	218	160	Tr130x10	110	37	66	M10	180
	100	CSE-150/100-GS	201,1	2010,6	81	302	402	288	218	160	Tr130x10	110	37	66	M10	180
	150	CSE-150/150-GS	201,1	3015,9	93	352	502	338	218	160	Tr130x10	110	37	66	M10	180
	200	CSE-150/200-GS	201,1	4021,2	109	418	618	404	218	160	Tr130x10	110	37	66	M10	120
<b>200</b> /1984,7	100	CSE-200/100-GS	283,5	2835,2	112	320	420	306	258	190	Tr160x10	138	47	70	M12	200
	150	CSE-200/150-GS	283,5	4252,9	127	370	520	356	258	190	Tr160x10	138	47	70	M12	200
	200	CSE-200/200-GS	283,5	5670,5	147	430	630	416	258	190	Tr160x10	138	47	70	M12	200
	250	CSE-200/250-GS	283,5	7088,2	164	485	735	471	258	190	Tr160x10	138	47	70	M12	140
<b>250</b> /2424,5	50	CSE-250/50-GS	346,4	1731,8	152	310	360	296	290	210	Tr170x10	148	52	74	M16	230
	150	CSE-250/150-GS	346,4	5195,4	194	410	560	396	290	210	Tr170x10	148	52	74	M16	230
	250	CSE-250/250-GS	346,4	8659	240	519	769	505	290	210	Tr170x10	148	52	74	M16	150
<b>300</b> /2908,3	150	CSE-300/150-GS	415,5	6232,1	219	414	564	400	308	230	Tr180x10	158	57	80	M16	250
	250	CSE-300/250-GS	415,5	10386,8	267	519	769	505	308	230	Tr180x10	158	57	80	M16	160
<b>400</b> /4007,9	150	CSE-400/150-GS	572,6	8588,3	344	455	605	441	365	270	Tr220x10	196	67	86	M16	300
	250	CSE-400/250-GS	572,6	14313,8	411	555	805	541	365	270	Tr220x10	196	67	86	M16	200
<b>500</b> /4948	150	CSE-500/150-GS	706,9	10602,8	435	478	628	464	400	300	Tr240x10	214	72	97	M16	330
	250	CSE-500/250-GS	706,9	17671,4	531	596	846	582	400	300	Tr240x10	214	72	97	M16	230
<b>600</b> /5987	150	CSE-600/150-GS	855,3	12829,5	554	499	649	485	440	330	Tr270x10	244	82	105	M16	370
	250	CSE-600/250-GS	855,3	21382,4	672	617	867	603	440	330	Tr270x10	244	82	105	M16	250

*Different strokes and tonnages available.*